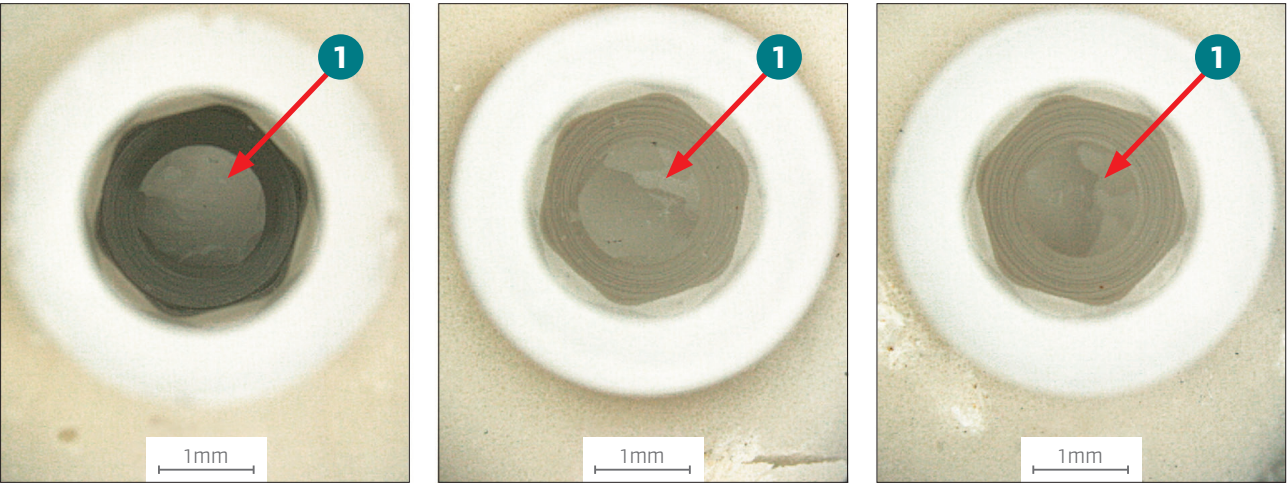


How to remove a ceramic screw fragment from a ceramic implant

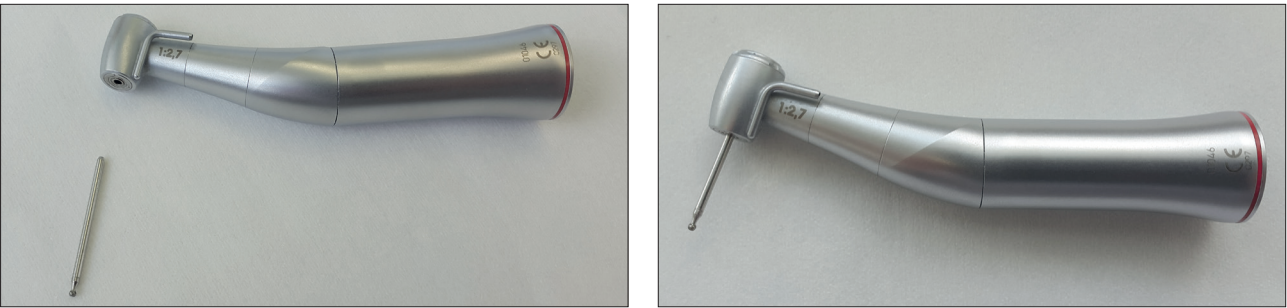
If an abutment failure occurs or the instructions for screwing in the ceramic screw are ignored, the ceramic screw (BL-OSC-H) may break. After a fracture a screw fragment ❶ may remain in the internal thread of the Z5-BL implant. Possible fracture situations are shown in the following figure.



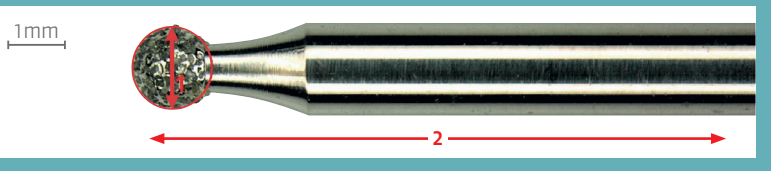
❶ screw fragment (BL-OSC-H)

Instructions for removing a ceramic screw fragment

Clamping the Diamond Grinder Round in the contra angle Handpiece



RECOMMENDATION:
Diamond Grinder "round", Medium Grit
1) Ø 1.4 ± 0.1 mm
2) L = 25 to 30 mm

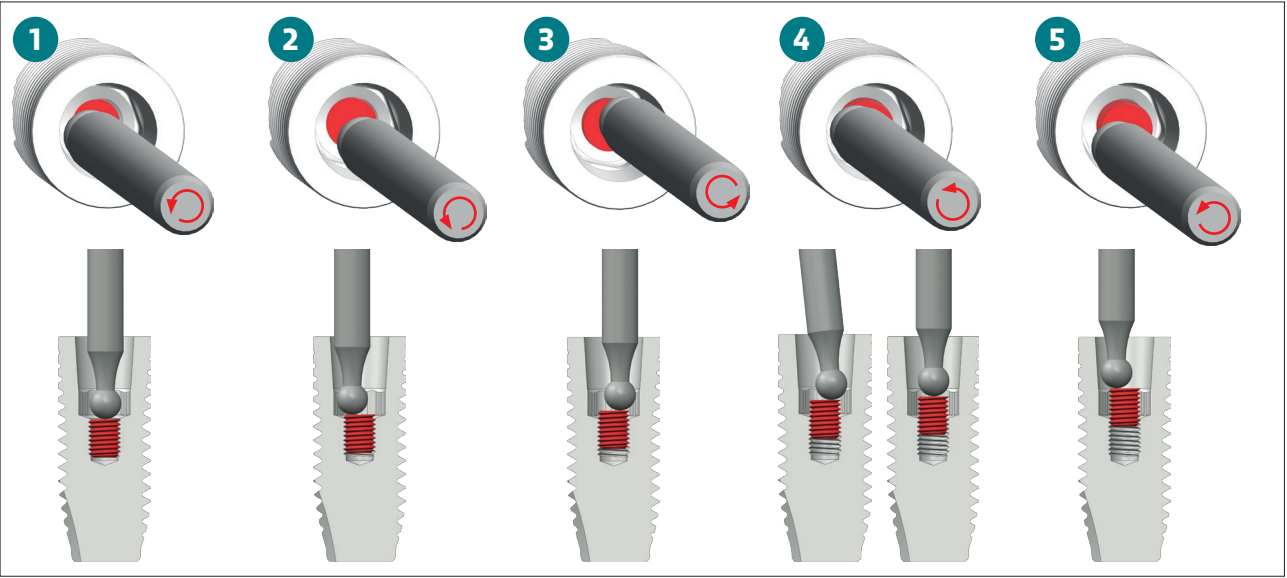


Program setting of the drive unit:

Speed (rpm)	15-20
Direction of rotation	(M) left-handed counterclockwise

NOTE: For the safe turning out a new grade diamond grinder medium grain must be used.

The Diamond Grinder Round is pressed against the screw fragment (red) to unscrew the fragment at 15 rpm, as shown in the figure below with the steps from 1 to 5.



RECOMMENDATION:
Unscrew the screw fragment (red) by slightly eccentric guidance of the diamond grinder around the implant axis.

