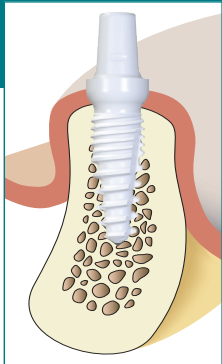


# Z5m(t)

Das Implantat für die Sofortimplantation und weiche Knochenklassen



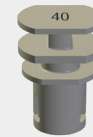
	Ø 4,0 mm	Ø 5,0 mm
Länge in mm		
8	Z5m(t)-40-08	Z5m(t)-50-08
10	Z5m(t)-40-10	Z5m(t)-50-10
12	Z5m(t)-40-12	Z5m(t)-50-12



Gingivaformer	Abformkäppchen	Laboranaloge
---------------	----------------	--------------



G36, G40, G50, G50R, G36-0,  
G40-0, G50-0, G50R-0



I36, I40, I50, I50R

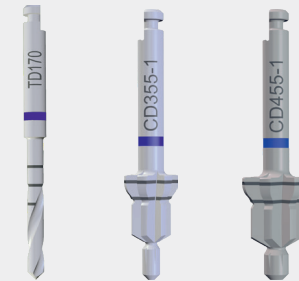


L36, L40, L50, L50R

Instrumente	Bohrer
-------------	--------



HA12, RA16\*, RA24\*



TD170, CD355-1, CD455-1

\*auch zum sicheren Handling des Z5c Abutments beim Einkleben

