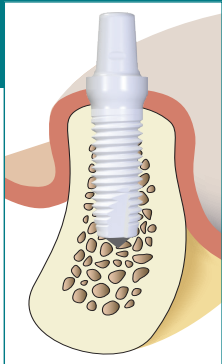


Z5m

The trusted implant for a variety of indications



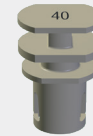
	Ø 3,6 mm	Ø 4,0 mm	Ø 5,0 mm
Length in mm			
8	Z5m-40-08	Z5m-50-08	
10	Z5m-36-10	Z5m-40-10	Z5m-50-10
12	Z5m-36-12	Z5m-40-12	Z5m-50-12



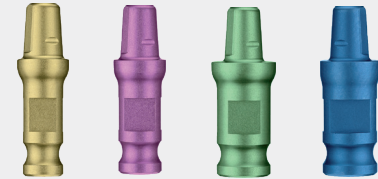
Gingiva former Impression caps Laboratory analogue



G36, G40, G50, G50R, G36-0,
G40-0, G50-0, G50R-0

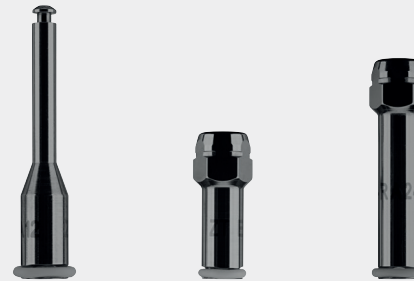


I36, I40, I50, I50R



L36, L40, L50, L50R

Instruments



HA12, RA16*, RA24*

*also for safe handling of the Z5c abutment when gluing in

