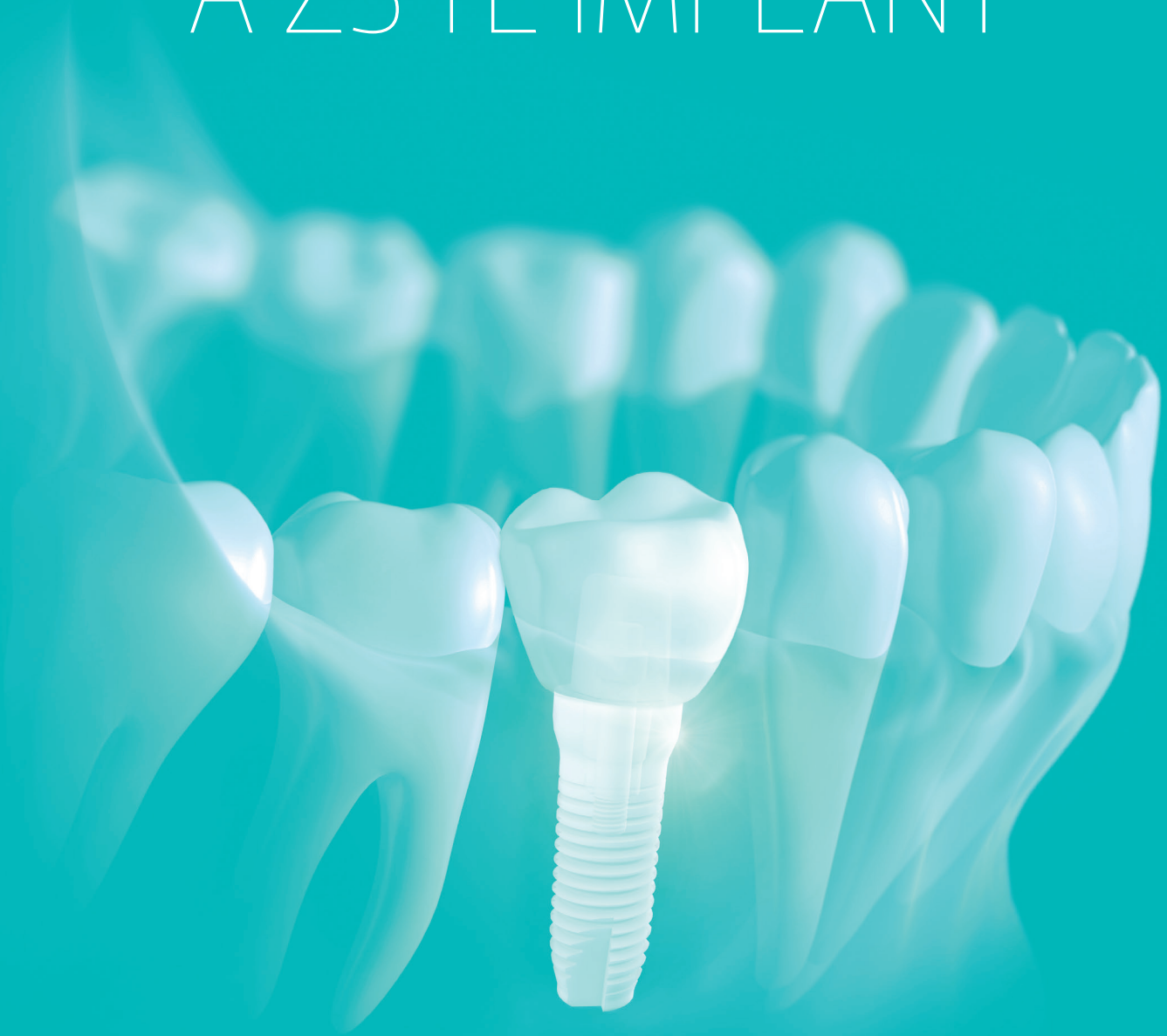
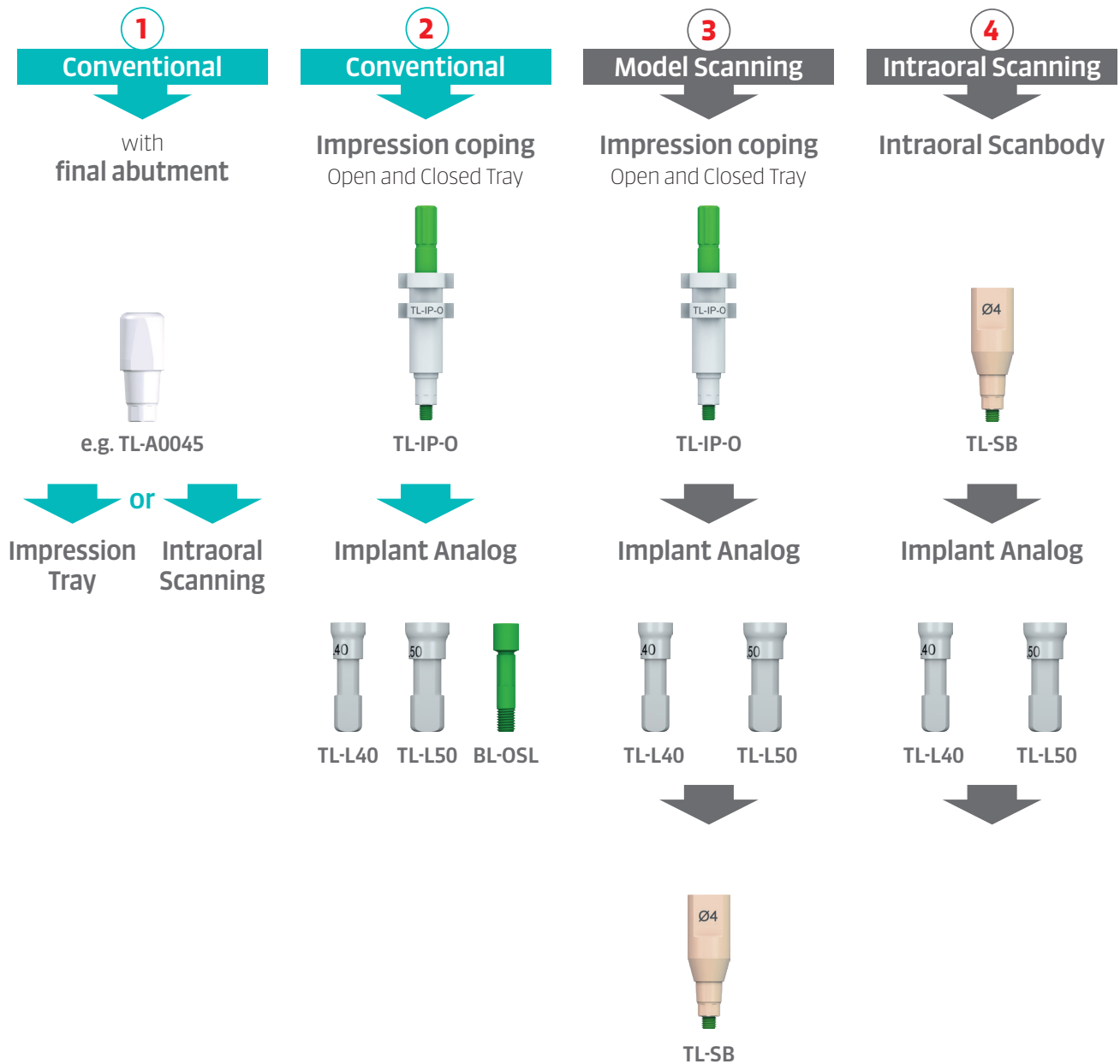


HOW TO RESTORE A Z5-TL IMPLANT



How to restore a Z5-TL implant



NOTE: Always order the abutment with the laboratory screw „BL-OSL“ for laboratory work. The BL-OSC-H/OST-H basal screws are intended for clinical use only.

Abutment

Straight/angled



TL-A0045, TL-A0055, TL-A1545, TL-A1555

Locator-type abutment



TL-LC0015, TL-LC0030, TL-LC0040, TL-LC1515, TL-LC1530, TL-LC1540

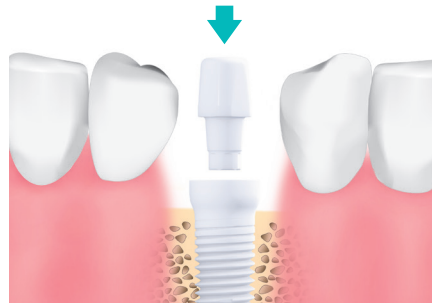
For temporary and healing abutments, see user manual or list of articles.

How to restore a Z5-TL implant

Intraoral cementation*

* extraoral cementation is not possible

1



Insert the abutment into implant body by hand. The internal hexagon ensures the abutment is fully seated.

Screws delivered with both screwdriver options

titanium ceramic



BL-OST-H BL-OSC-H



SD-BS-S SD-BS-L

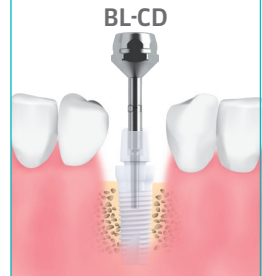
2



Connect abutment and implant using occlusal screw. Screw until driver breaks.

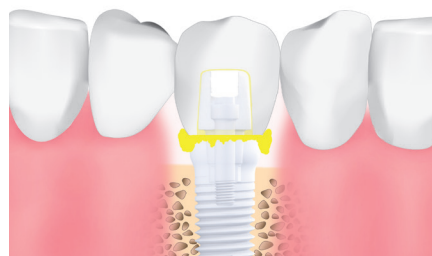
NOTE

For abutment removal, remove the screw using screwdriver SD-BS-S/L, then elevate the abutment with BL-CD.



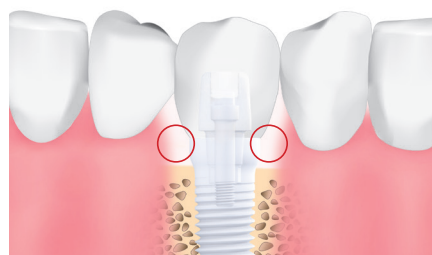
Do not forget to use dental floss to secure the driver pieces.

3



Pack the screw channel with teflon tape and cement on the final abutment.

4



Important: Remove all excess cement.

General Rules

1 Check before Final Prosthesis

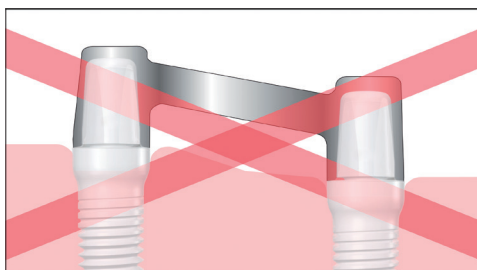
- No peri-implantitis
- No clinically noticeable loosening of the implant
- No pain in the vicinity of the implant
- No implant mobility under reverse torque testing
- No radiographic visible peri-implant gap

3 Bar restorations

- Stabilisation and primary blocking of the implants
- Securing the prosthesis against pulling and levering forces
- Force distribution
- Resilience compensation through degrees of freedom



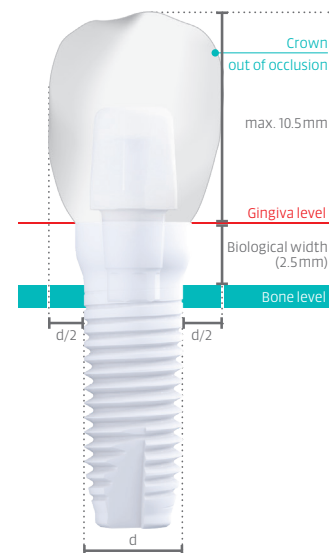
Schematic diagram



Schematic diagram: No inclined arrangement of the bar link

2 Avoid Over-dimensioned Crowns

To prevent excessive bending movements, the crown should NOT exceed more than 10.5 mm in height above implant shoulder (as seen in the graphic).



Recommendation:
The horizontal crown width should NOT exceed $d/2$ overhang (d = implant diameter) from the implant itself.

4 Multi-tooth restorations

Position implants parallel to each other (a divergence up to 7° is possible) to be able to withdraw the impression posts.



Please always check the Z5-TL user manual.